

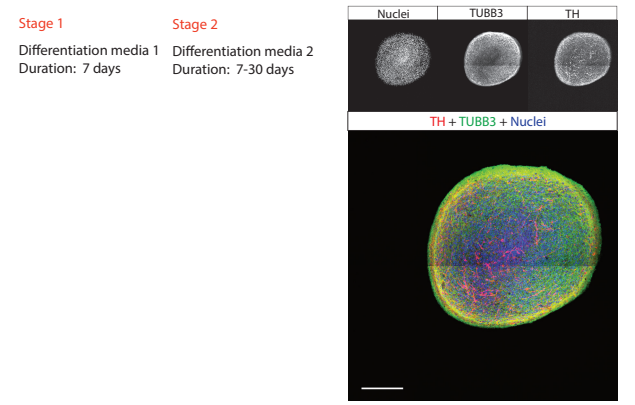
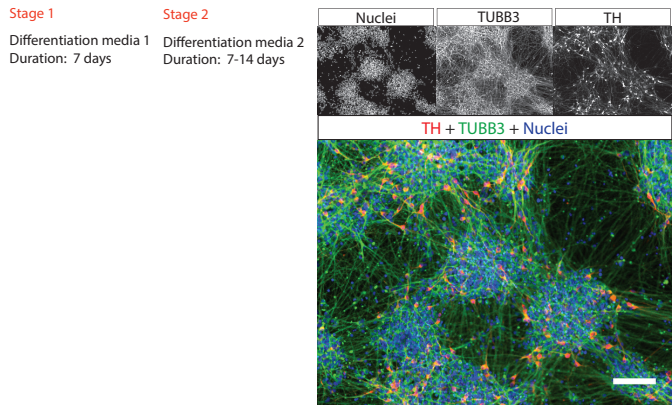
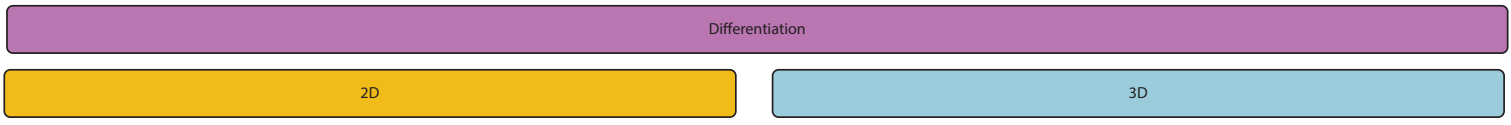
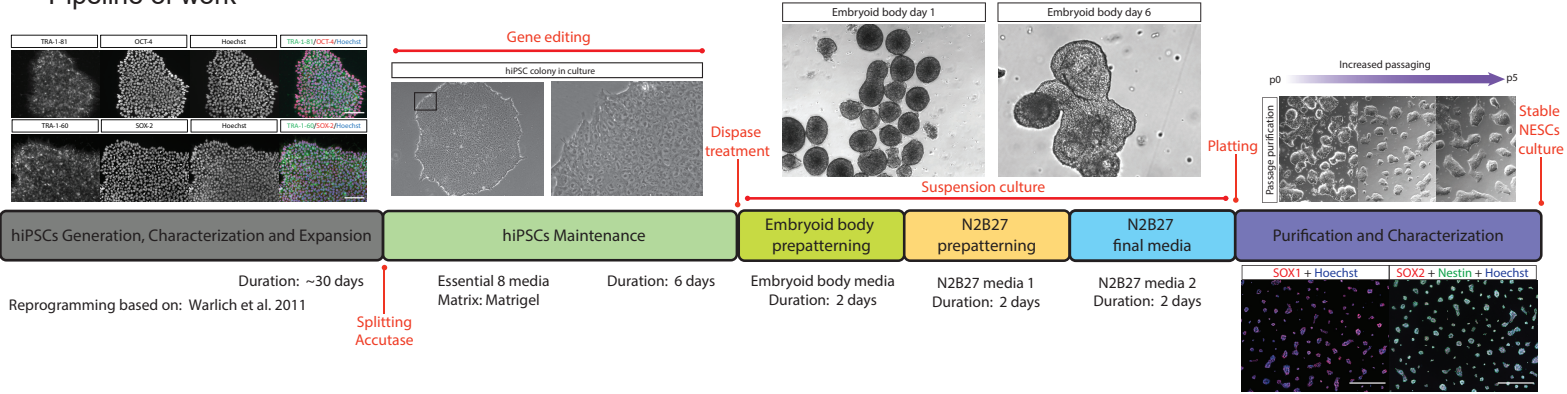
Fig. S1

A

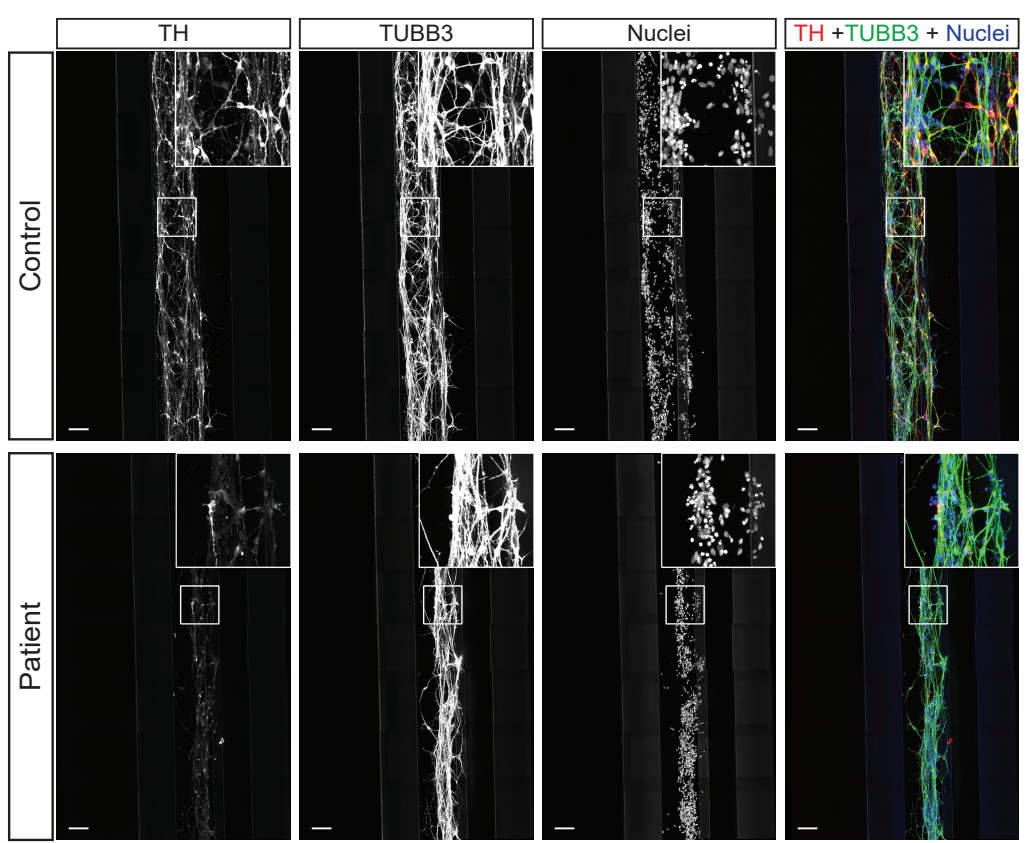
| | Mutation | Gender | Age | | Source | Database |
|--------------------|----------|--------|-------|----------|------------------------|----------|
| | | | onset | sampling | | |
| Healthy control 1 | - | ♀ | - | 81 | Reinhardt et al., 2013 | 506 |
| Healthy control 2 | - | ♀ | - | 53 | Reinhardt et al., 2013 | 509 |
| Healthy control 3 | - | ♂ | - | 59 | W. Skarnes | 548 |
| Patient PINK1 1 | Q456X | ♀ | 61 | 69 | C. Klein | 537 |
| Patient PINK1 2 | Q456X | ♀ | 53 | 61 | C. Klein | 551 |
| Patient PINK1 3 | I368N | ♂ | 33 | 64 | Coriell | 511 |
| Patient Parkin | R275W | ♀ | 43 | 61 | Coriell | 513 |
| Patient PINK1 1 GC | - | ♀ | 61 | 69 | C. Klein | 571 |
| Patient PINK1 2 GC | - | ♀ | 53 | 61 | C. Klein | 569 |
| Patient PINK1 3 GC | - | ♂ | 33 | 64 | Coriell | 572 |

B

Pipeline of work



C



D

